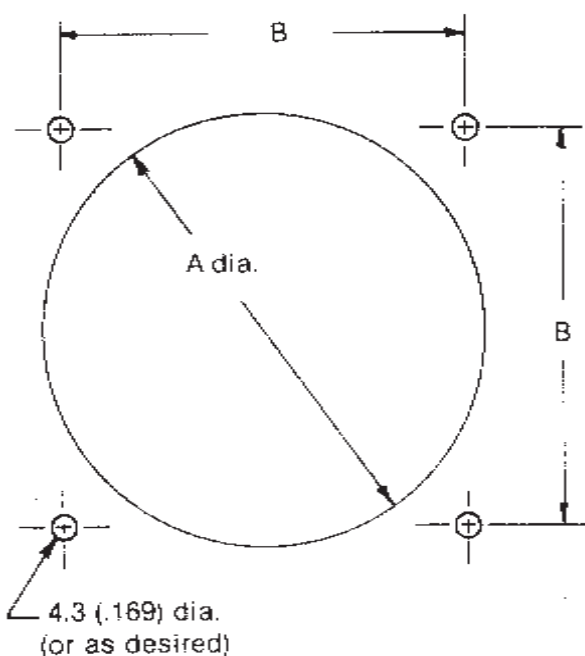




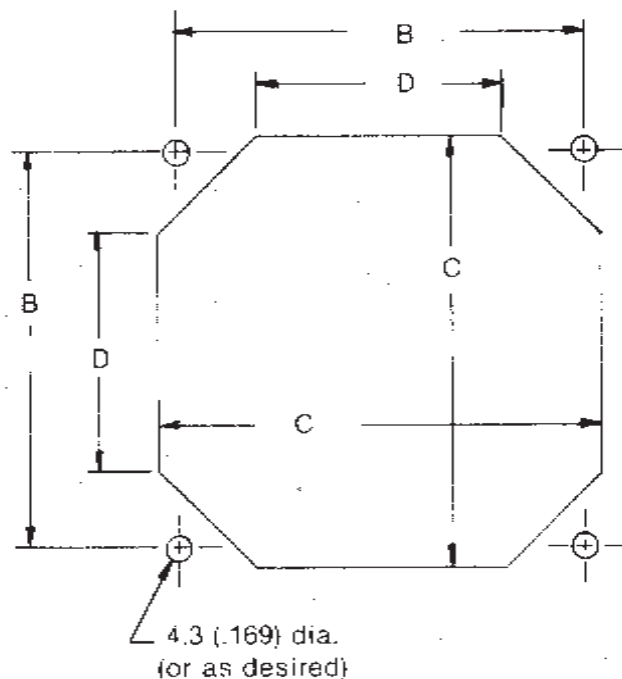
RECOMMENDED MOUNTING CUTOUT

DETAILS FOR 120, 92 & 80 SERIES



FOR INTAKE SIDE ONLY

Note: If used on exhaust side a slight increase in noise and reduction of airflow will occur.



FOR EXHAUST OR INTAKE SIDE

{Not applicable to 4C Series}

TABULATION

Fan Model	A Dim.	B Dim.	CDim.	D Dim.
UTSF120 Series	115.8 (4.56)	104.8 (4.125)	116.8 (4.60)	66.0 (2.6)
UTSF92 Series	90.4 (3.56)	82.5 (3.250)	91.4 (3.60)	50.8 (2.00)
UTSF80 Series	78.5 (3.09)	71.5 (2.815)	79.4 (3.12)	50.8 (2.00)
UTSF70 Series	68.3 (2.69)	61.5 (2.421)	68.3 (2.69)	42.4 (1.66)
UTSF60 Series	58.0 (2.28)	50.0 (1.960)	58.0 (2.28)	27.9 (1.10)
UTSF50 Series	48.5 (1.91)	40.0 (1.575)	48.5 (1.91)	25.4 (1.00)
UTSF40 Series	38.1 (1.50)	32.0 (1.260)	-	-
UTSF35 Series	34.8 (1.37)	29.0 (1.142)	-	-
UTSF30 Series	29.0 (1.14)	24.0 (.945)	-	-
UTSF25 Series	24.0 (.945)	20.0 (.787)	-	-