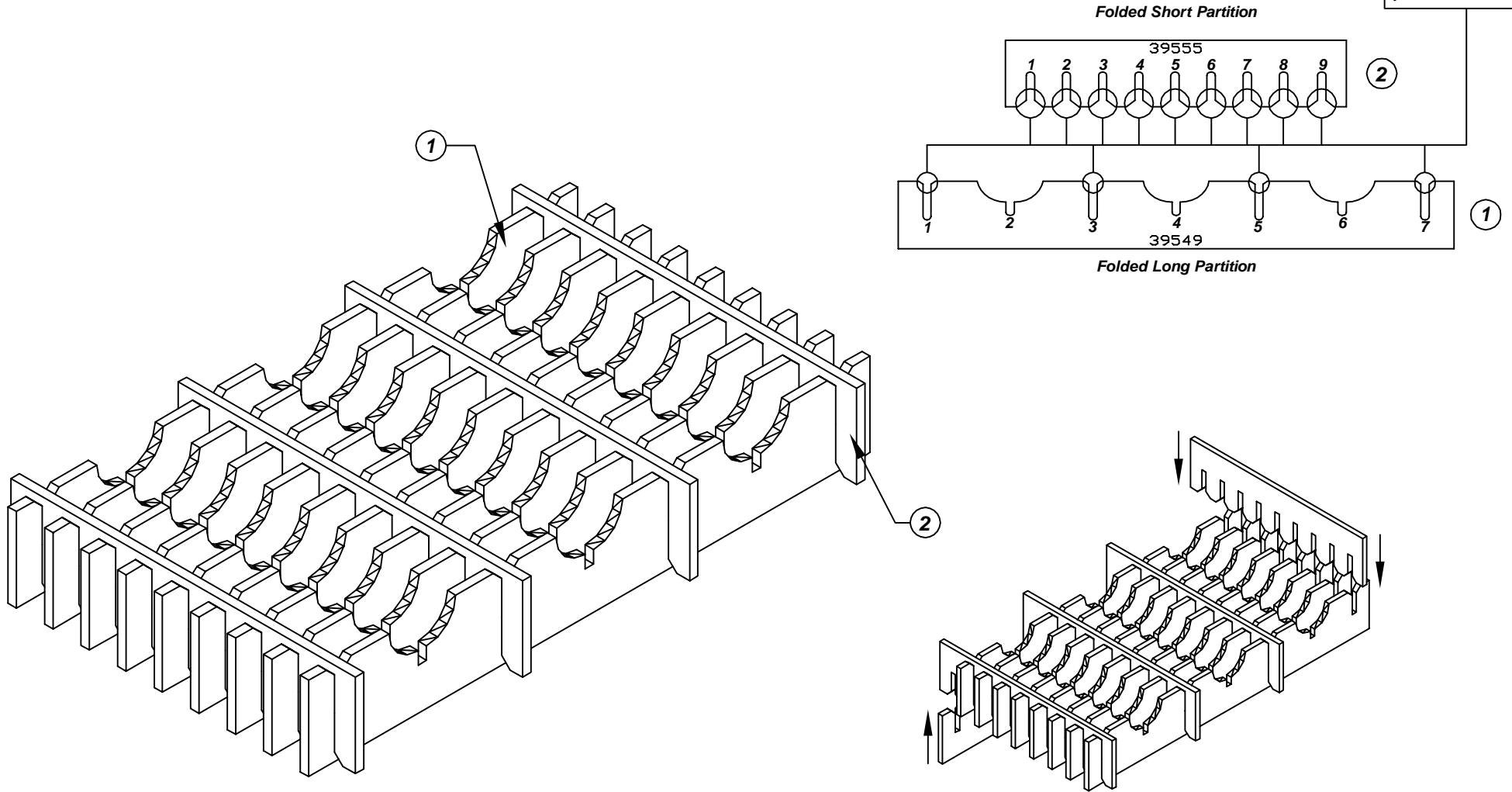


# Assembly Instructions for - 37232

Use only the circled slots for partition assembly



Made in America

F/N ①	Part # <b>39549</b>	Dimensions: <b>5-3/16" x 16-13/16"</b>	Description: <b>411/422-LP Long Partition</b>	Qty: <b>9</b>
F/N ②	Part # <b>39555</b>	Dimensions: <b>5-3/16" x 9-7/8"</b>	Description: <b>422-SP Short Partition</b>	Qty: <b>4</b>

Notes:  
For use with the following storage container & lid:  
37509 - Storage Container  
37550 - Lid

PROTEKTIVE PAK  
13520 MONTE VISTA AVENUE, CHINO, CA 91710  
PHONE (909) 627-2578, FAX (909) 363-7331  
ProtektivePak.com



DRAWING NUMBER  
**IPH-37232**

DATE  
**Nov. 2007**

**37232 - 30 Cell Inplant Handler**  
**Cell Size - 2-1/2" x 4-3/4" x 3/4"**