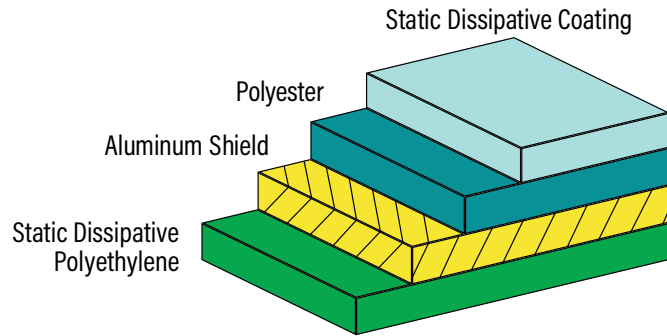
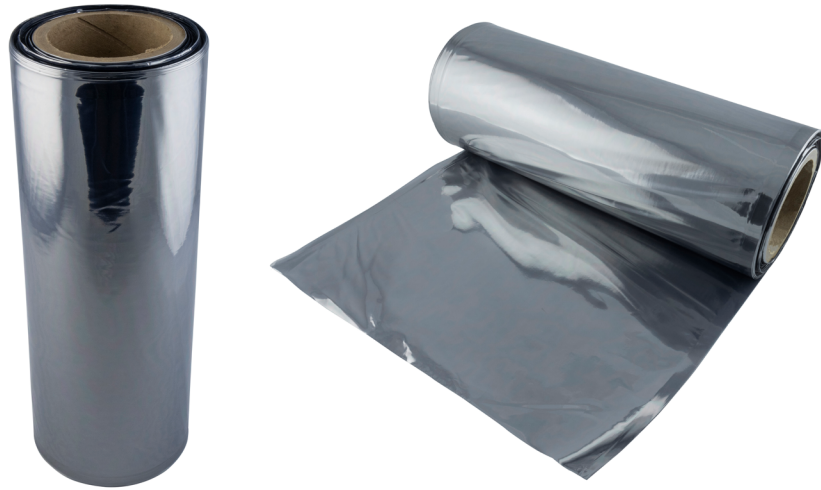


Static Shielding Tubing 1000 Series

This transparent metal-in static shielding tubing is designed to provide a static safe environment for ESD sensitive electronic devices. The tubing is heat sealable.

SCS Static Shielding Tubing 1000 Series is manufactured from a polyester, metal, polyethylene laminate. The polyester dielectric in concert with the metal layer provides discharge shielding. The exterior being static dissipative allows electrostatic charges to be removed when grounded.



RoHS, REACH, and Conflict Minerals Statement

See the SCS Regulatory Statement:
[StaticControl.com/pdf/Regulatory_Statement_SCS_Bags.pdf](https://www.staticcontrol.com/pdf/Regulatory_Statement_SCS_Bags.pdf)

See the SCS Limited Warranty:
[StaticControl.com/Limited-Warranty.aspx](https://www.staticcontrol.com/Limited-Warranty.aspx)

Specifications and procedures subject to change without notice.



Meets ANSI/ESD S20.20, Packaging standard ANSI/ESD S541

Physical	Typical Value	Testing Method
Tensile Strength	4600 PSI, 32 MPa	ASTM D882
Puncture Resistance	12 lbs, 53 N	MIL-STD-3010C Method 2065
Thickness	2.8 mils, 0.071 mm +/-10%	MIL-STD-3010C Method 1003
Marking Adhesion	Pass	IPC-TM-650 2.4.1
Transparency	40%	Tobias
Electrical	Typical Value	Testing Method
ESD Shielding	<10 nJ	ANSI/ESD STM11.31
Surface Resistance - Interior	1×10^4 to $< 1 \times 10^{11}$ ohms	ANSI/ESD STM11.11
Surface Resistance - Exterior	$< 1 \times 10^{11}$ ohms	ANSI/ESD STM11.11
Static Decay	< 2 seconds	MIL-STD-3010 Method 4046
Cleanliness	Typical Value	Testing Method
Silicone	Not Detected	FTIR
Heat Sealing Conditions	Typical Value	
Temperature	300°F – 375°F, 149°C – 190°C	
Time	0.5 – 3.5 seconds	
Pressure	30 – 70 PSI, 206 – 482 KPa	

Tubing is free of amines, silicones and heavy metals.

Stock Item Numbers	Roll Size
1000V 6X750	6" x 750'
1000V 8X750	8" x 750'
1000V 12X500	12" x 500'
1000V 18X500*	18" x 500'
1000V 20X750*	20" x 750'
1000V 24X750*	24" x 750'

*Build to Order

*Custom sizes available

Tolerance: Width $\pm 1/8"$; Length $\pm 10\%$

Unless otherwise noted, $\pm 10\%$



1000 SERIES STATIC SHIELDING TUBING ROLL

926 JR Industrial Drive, Sanford, NC 27332
 WEB SITE: [StaticControl.com](https://www.StaticControl.com)
 PHONE (919) 718-0000 | WEST: (909) 627-9634

DRAWING NUMBER
 1000 Tubing Roll

DATE
 August 2022