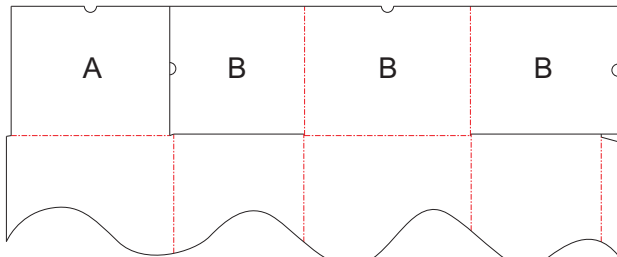
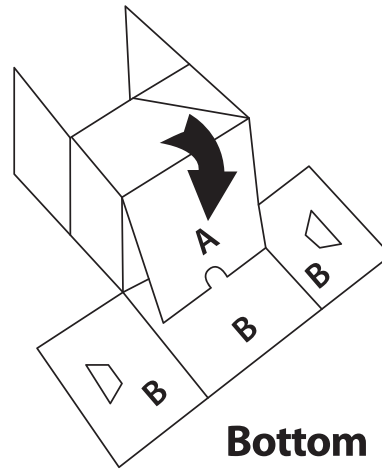


1.



Bottom flaps on the Trash Receptacle are labeled A & B to denote fold sequence.

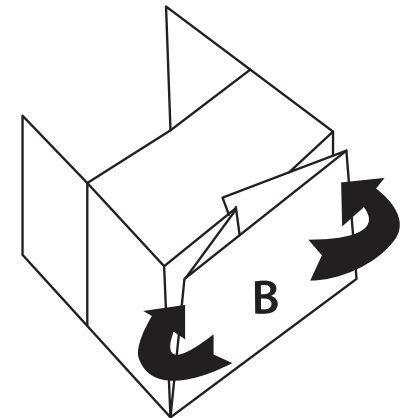
2.



Bottom

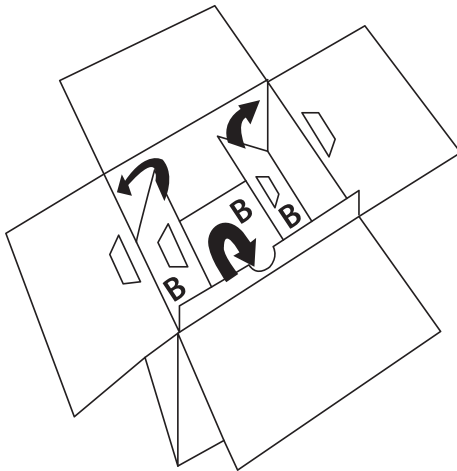
Prefold all creases on flaps A & B. Fold over flap A to the inside of the container.

3.



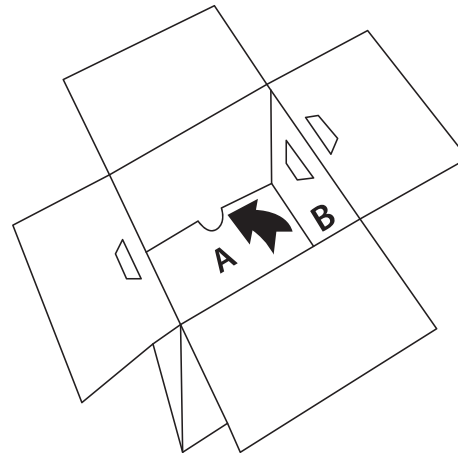
Fold up the extensions on flap B. Fold the panel up into the inside of the container.

4.



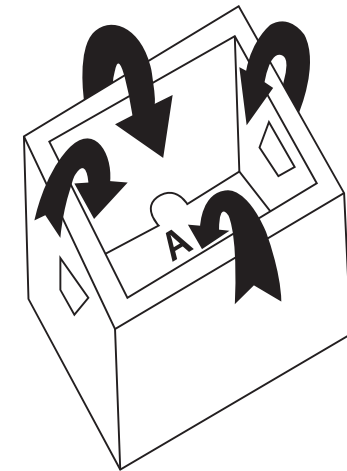
Turn the container upright. Bring flap A upright to a vertical position. If your container includes handles insert them now, then fold up the extensions of flap B against the inside of the container.

5.



Fold flap A down into the bottom of the container. If your container includes a wire frame place this along the top of extensions of flap B.

6.



Fold all top flaps down into the box. Make sure that the flaps interlock with each other.



Made in the United States of America

PROTEKTIVE PAK
BURIED SHIELDING LAYER

PROTEKTIVE PAK
 13520 MONTE VISTA AVENUE, CHINO, CA 91710
 PHONE (909) 627-2578 FAX (909) 927-8444
ProtektivePak.com

DRAWING NUMBER
 37810 / 37811
 Assembly

DATE
 August
 2015