

# SmartLog X<sup>3</sup>

Daisy-Chaining Instructions

Follow the below instructions to properly daisy-chain up to 32 SmartLog X<sup>3</sup> devices.

## Materials:

- Phone wire 4 conductor (at least 2 conductors are required)
- Screwdriver

## Wire Assembly:

1. Take one side of the phone wire and strip 1" of the insulation off exposing the internal conductors.
2. Take the two middle conductors and strip ¼" of the sleeve off exposing the wire. (See Figure 1)
3. Locate the RS-485 2-pin green connector from the back of the SmartLog X<sup>3</sup> and remove it.
4. Open both slots by unscrewing the top screws of the green connector. (See Figure 2)
5. Insert the middle conductors into each slot of the green connector and screw them secure. (See Figure 3)

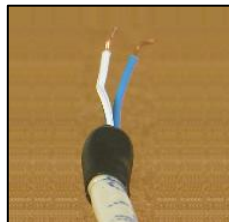
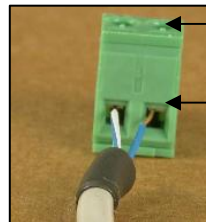


Figure 1



Figure 2



Fasten the screws to secure the wire

Wire inserted on top opening

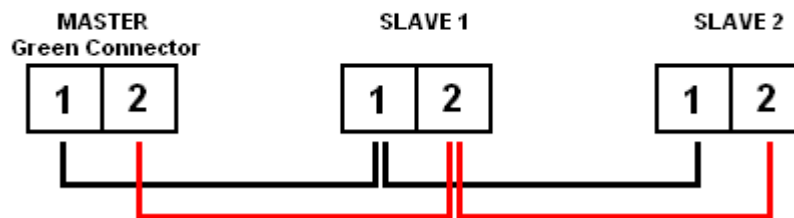
Figure 1

Figure 2

Figure 3

## Wire Configuration

### Parallel Wire Assembly



Follow the above steps to configure the other half of the wire. The wires must be parallel to each when inserting into each 2-pin connector. If the wires are crossed, they will not communicate correctly. (See "Wire Configuration" above)

Once both ends of the wire are assembled, insert them back into of each the SmartLog X<sup>3</sup> devices. (See Figure 4)

## Clock Setup:

6. Set the RS-485 switch on the back of the SmartLog X<sup>3</sup> that is hardwired to the local PC to "Master." (See Figure 4)
7. Set the ID of the "Master" SmartLog X<sup>3</sup> device to "00". (this is the default ID)

8. Set the RS-485 switch on the SmartLog X<sup>3</sup> devices that are daisy-chained to "Slave."
9. Set the ID of the "Slave" SmartLog X<sup>3</sup> device to "01."

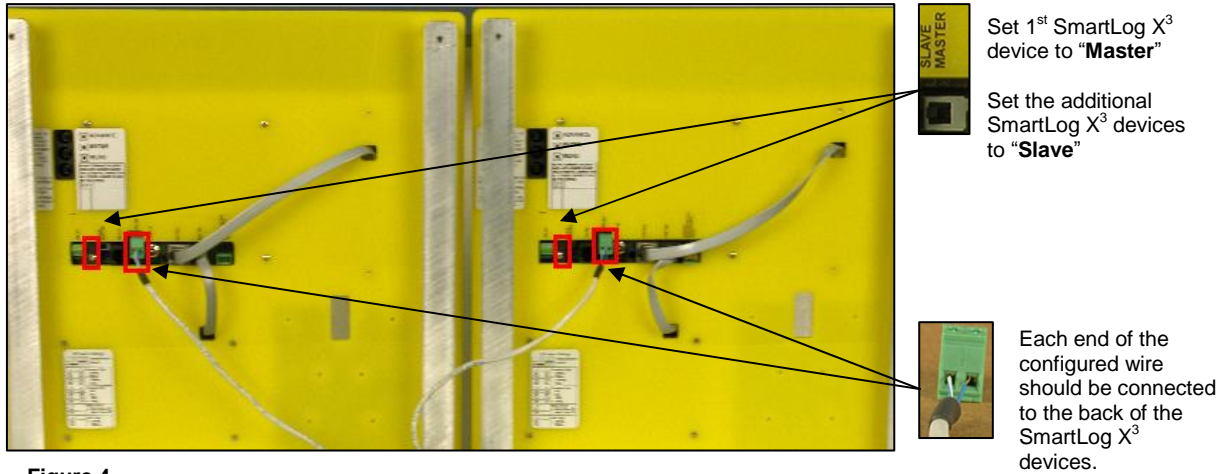


Figure 4

The RS-485 switch will need to be set to "Slave" for each additional SmartLog X<sup>3</sup> device being daisy-chained. Each Slave will need to have a different ID from the first (Ex: 01, 02, 03, etc.). To change the clocks ID, see page 6 of TB-6552.

#### Software Setup:

10. Open TEAM Basic software
11. Go to "Test Machine" tab
12. Under "Network Settings" set ID Start to "00" and End to "02." (See Figure 3)
13. Turn "Polling" on if not already

If more than two SmartLog X X<sup>3</sup> devices are daisy-chained, the End ID would be set to the last SmartLog X3 device connected.

ID Start: 00

The **End ID** should be the ID number of the last SmartLog X<sup>3</sup> device daisy-chained.

If done correctly, all SmartLog X<sup>3</sup> devices will show "ONLINE" from the same comport location.

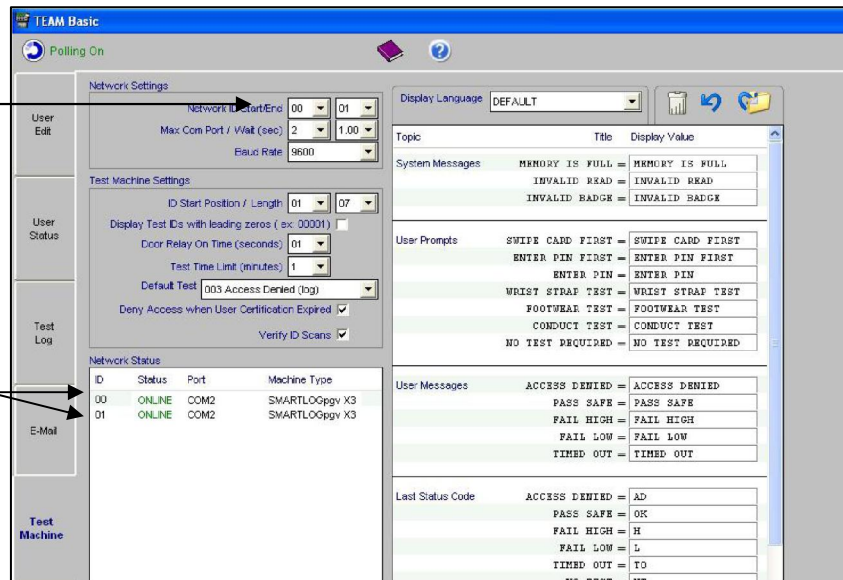


Figure 5

If installation was done successfully, all daisy-chained SmartLog X3 devices will show "ONLINE" up under the "Network Status" window.

If installation support is needed, please feel free to call the EMIT factory (909-664-9980).