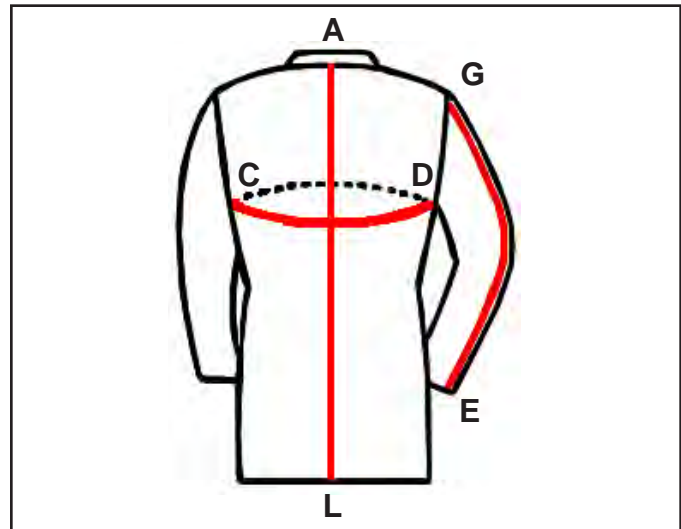


Static Dissipative Lab Coat Instructions for Use



Figure 1. Charleswater Static Dissipative Lab Coat

- Coats are CE certified
- Standard colour: white
- Custom colours available
- Company logo (embroidered or printed) available on request



Description

Charleswater Static Dissipative Lab Coats meet the required limit Rp-p less than 1×10^{12} ohms in EN 61340-5-1 tested per ANSI/ESD STM2.1.

“The ESD risk provided by everyday clothing cannot be easily assessed. The current general view of experts is that the main source of ESD risk may occur where ESDS [ESD sensitive items] can reach high induced voltage due to external fields from the clothing, and subsequently experience a field induced CDM [Charged Device Model] type discharge. So ESD control garments may be of particular benefit where larger ESDS having low CDM withstand voltage are handled, and operators habitually wear everyday clothing that could generate electrostatic high fields.” [CLC TR 61340-5-2 User guide Garments sub-clause 4.7.7.1 Introductory remarks]

Main features:

- Lightweight, comfortable and breathable material
- Composition: Cotton, polyester and conductive fibres
- 2 side pockets and 1 breast pocket
- Unisex sizes from XS to XXL (see table)
- ESD protective symbol on breast pocket
- Quick opening and closing snap
- Buttons are not exposed (covered by overlap); with back pleats
- Meets required limit of EN 61340-5-1 Rp-p $< 1 \times 10^{11}$ ohms tested per ANSI/ESD STM2.1
- Optimized width of conductive grid
- Machine washable (40°C); resistant to repeat washing cycles

Sizes and Measurements

Part #	Size*	Shoulders (cm)	C-D (cm)	A-L (cm)	G-E (cm)
72130	XS	40	113	88	55
72131	S	43	116	90	58
72132	M	45	122	94	59
72133	L	46	126	97	60
72134	XL	50	132	100	62
72135	XXL	53	138	103	64

Please note that measurements are in cm and are an indication only.

Measurements equal average sizes and can be subject to change without notice

*Unisex Fit Both for Men and Women