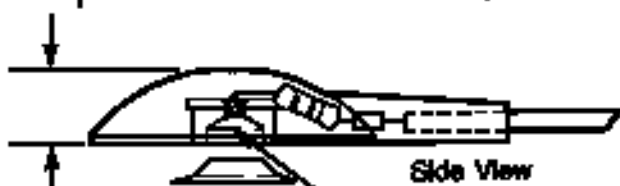
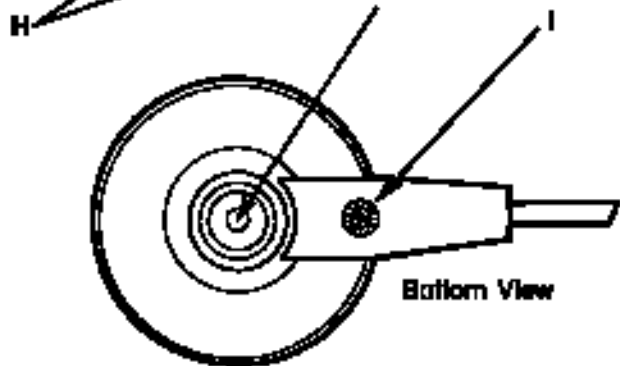


ITEM	DESCRIPTION
95307	One Megohm Resistor to Mat - Black Wire



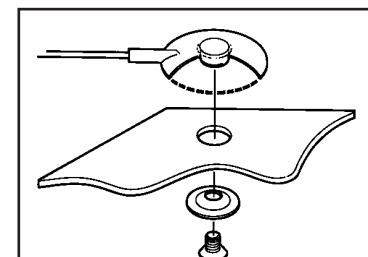
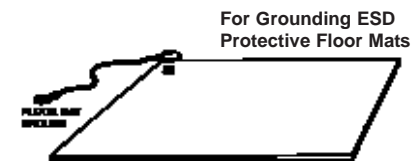
Side View



Bottom View

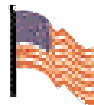
Key:

- A. 10mm (0.395 in.) male snap to ground floor mats.
- B. Molded in black thermoplastic elastomer.
- C. High flex strand copper, 20 gauge, with PVC insulated jacket. Black insulation OD = 0.107"
- D. Ring terminal, 0.200" ID, (#10).
- E. Extra ring terminal provided for customizing length.
- F. One megohm resistor between the snap and ground.
- G. Brass crimp secures conductors and provides stress relief.
- H. 6-32 x 1/4" flat head screw and washer allow floor mat ground to be bolted to mat.
- I. Date coded to show month and year of manufacture.



Screw allows ground cord to be bolted to mat; keeps cord from disconnecting.

SPI



Made in America



Ground Cord, Floor Mat, Threaded 10mm Snap Stud

ESD SYSTEMS.com

ESD SYSTEMS.COM
 432 NORTHBORO ROAD CENTRAL
 MARLBORO, MA 01752 USA
 TEL. (508) 485-7390 FAX (508) 480-0257



Visit our online
 library of Tech Drawings:
 ESDSystems.com

DRAWING:
 95307

DATE:
 December
 2008